

WATER FOUNTAINS



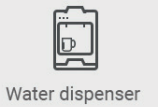
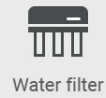
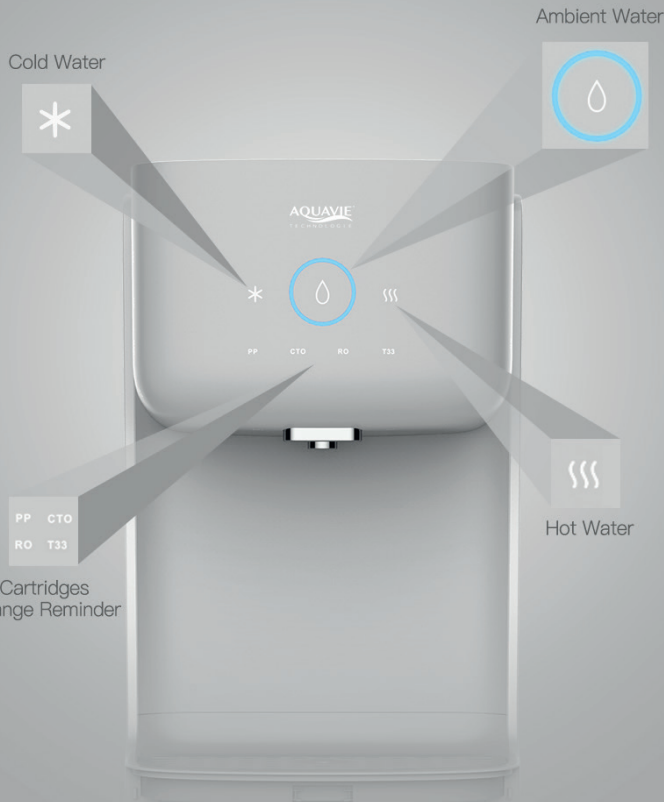
Scan me



# Osmo

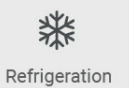
Pure Water Fountain Dispenser

## Touch Panel



=

+



4 steps  
of filtration  
+ UV



Filter  
Replacement  
Reminder



Hot Water



Cold Water

## Filtered Water Fountain OsmO

REF : ATW10016

## Filtered and carbonated Water Fountain OsmO Bulle

REF : ATW10017



Filtration level	4
Auto flush	✓
Tempered water	✓
Cold water	✓
Hot water	✓
Carbonated water	✓ (OsmO Bulle only)
Color	<b>White &amp; Grey</b>

Stages of filtration	x 4 (PP Sediment cartridge, Block carbon cartridge, RO membrane 150 G, Post Carbon cartridge)
----------------------	---

Power	220 v / 50 Hz - 665W (500W heating, 150 W cooling, 15 W water production)
-------	---

UV Sterilizer	Yes (LED)
---------------	-----------

Control panel	Sensitive panel
---------------	-----------------

Cartridge alert	Yes x 4
-----------------	---------

Dimension	54x47x151 cm – 38 Kg
-----------	----------------------

OsmO is a self-contained water cooler that requires no bottled water. Connected to the mains water supply, it purifies, refreshes or heats your water. The device warns you when you need to change the cartridges, which are very easy to replace thanks to a quick quarter-turn system.

With the Osmo BULLE version, you can also have fresh carbonated water!

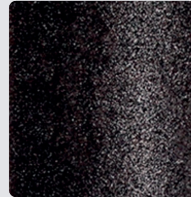
### 4 stages of filtration with UV sterilizer

Lifetime  
**12 Months**



Smooth PP Spun Filter

Lifetime  
**12 Months**



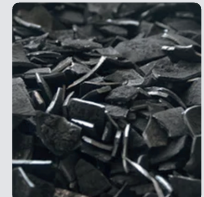
Compacted Activ Carbon Filter

Lifetime  
**18 Months**



RO Membrane

Lifetime  
**12 Months**



Coco Carbon filter (finition)

\* These lifetime informations are given as an indication only and may vary according to your use and your water hardness.



Bayonet Filter Cartridge  
Easy to install and replace

