

RO MATE

LE COMPAGNON



AQUAVIE®
TECHNOLOGIE

Content

1 - Introduction	p 3
2 - Installation	p 3-5
3 - Filter usage and maintenance filter flushing	p 5-7
4 - Trouble shooting	p 7
5 - Technical specifications	p 7



1 – Introduction

Thank you for purchasing the Aquavie Technologie's «Le Compagnon» RO MATE. This filter can be changeable which ensures the excellent filtration function, and moreover, it works under low energy consumption.

This filter is made of sintered coconut shell carbon which can remove chlorine effectively, and has an excellent performance on improving the taste of purified water.

2 – Installation

PACKAGE CONTENTS:

RO MATE: 1 pc,

QUICK FITTING FOR FAUCET: 1pc,

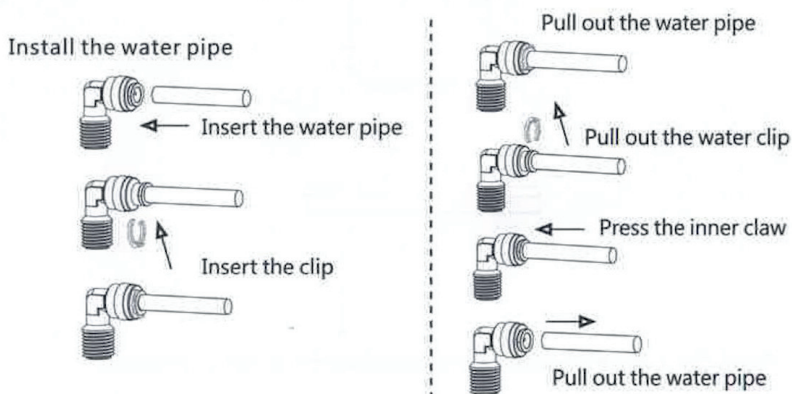
1/4» TUBING: 1pc (1,5m),

MANUAL: 1pc.

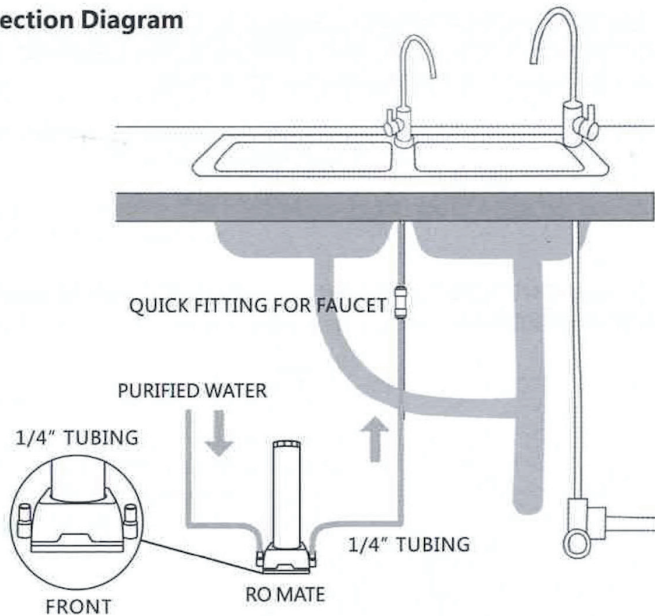
OTHER TOOL SUGGESTED TO BE PREPARED: TUBE CUTTER

TUBE CUTTER NOTICE: Cut the tube with tube cutter and make it flat and smooth without any burrs.

Quick Fitting



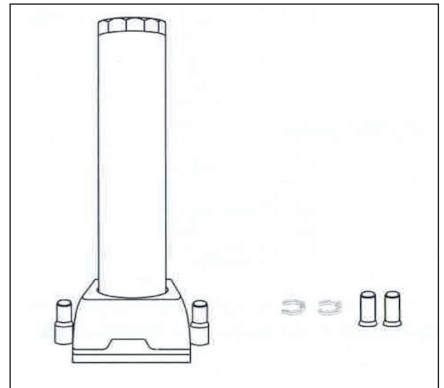
Connection Diagram



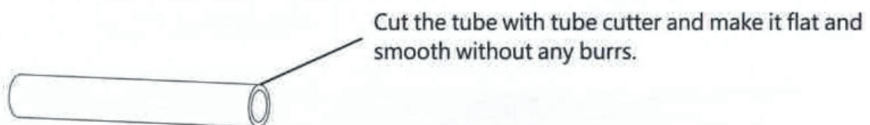
Turn off the feed water valve of the filtration system.

Open the faucet to drain any remaining water from the system, then power off the filtration system.

Remove the RO MATE and unplug both connectors. Finally, place all components under the kitchen sink.

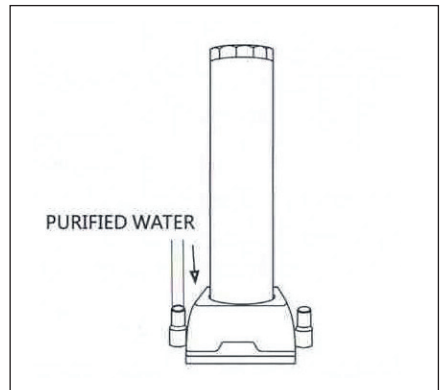


Take out the 1/4" TUBING from the PACKAGE, cut it into two pieces using your TUBE CUTTER. Ensure each piece is long enough to connect the RO MATE to both your faucet & your filtration system.



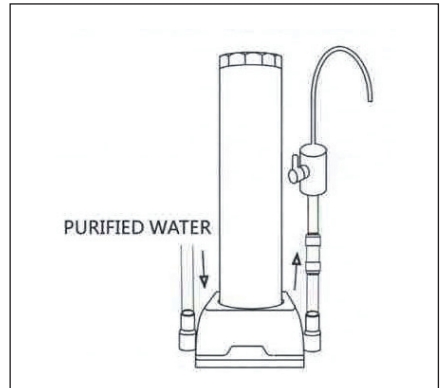
Cut the tube with tube cutter and make it flat and smooth without any burrs.

Connect one piece of tubing to the left side of the RO MATE, then connect the other end to the outlet of the filtration system.



Connect another piece of tubing to the right side of the RO MATE, then connect the other end to the faucet using the faucet quick fitting from the package.

Check that all tubings are connected correctly according to the connection diagram at the beginning of the section.



3 – Filter usage and maintenance filter flushing

For the first use, please flush the filter using the following method:
Open the faucet and let the water flow out. Continue flushing until the output water is visibly clean.

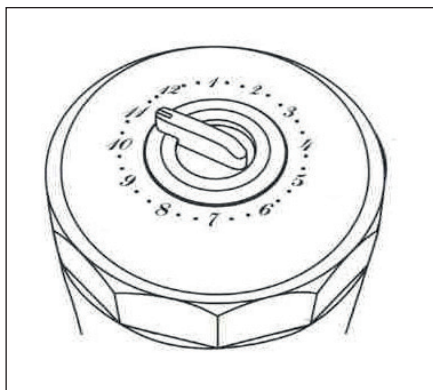
Reminder: there may be a small amount of black water during the first use, but don't worry—this is a normal phenomenon.

Date Dail-up Plate

Mark the filter replacement date to remind you when it's time to replace the filter again.

Operation

After installation and filter flushing, your RO MATE is ready for use. When you need pure water, simply open the faucet and the pure water will flow out. After use, just close the faucet and the water flow will stop.



Maintenance

To ensure the unit operates at its optimal level, routine maintenance, including filter replacement, is required. The frequency of replacement depends on the quality of the inlet water and the amount of system usage.

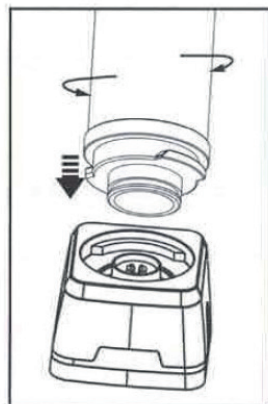
If the RO MATE is installed after the RO system, it is recommended to replace the filter 6 to 12 months after the initial setup.

(Actual timing will depend on the quality of the inlet water and the amount of water used.)

Filter Replacement

Kindly note: Please prepare a towel or tissue in case your kitchen gets wet.

1. Close the feed water valve.
2. Open the faucet and drain any remaining water from the system.
3. Rotate the old filter clockwise to remove it from the cap.
4. Align the new filter with the central cap, then gently twist it into place.
5. Turn the filter counter-clockwise to tighten it, then open the valves.
6. Perform the filter flushing process after replacing the filter.



Caution

1. Clean the RO MATE and replace the filter regularly.
2. Do not disassemble or modify this unit. Tampering with the unit may cause failure or damage and will void the warranty.
3. Turn off the feed water valve if you are not going to use it for an extended period.
4. If the unit will not be used for a long time, please perform the filter flushing process as you would during the initial setup.
5. Be careful during loading, unloading, transportation, and installation.

4 – Trouble shooting

Problem > Cause > Solution

Leakage > Quick fitting leaks / Filter leaks / Filter cap leaks > Identify the cause of the leakage and replace the corresponding parts.

No water output > Quick fitting clogged / Filter clogged / Filter cap clogged > Replace parts one by one to identify the cause of clog.

5 – Technical specifications

Model No: RO MATE «Le Compagnon»

Feed water quality: municipal tap water or reverse osmosis system

Feed water temperature: 5-38°C

Feed water pressure: 0.1-0.4MPa

Operate environment temperature: 4-40°C

Total purified amount: 2000L

Purified water flow: 2-3L/Min (effected by feed water)

RO MATE net weight: 660g

AQUAVIE®

TECHNOLOGIE

